



300Mbps Wireless N 4G LTE Router

Wi-Fi Where You Need It



TL-MR6400

4G 4G(TDD&FDD)/3G
Compatible

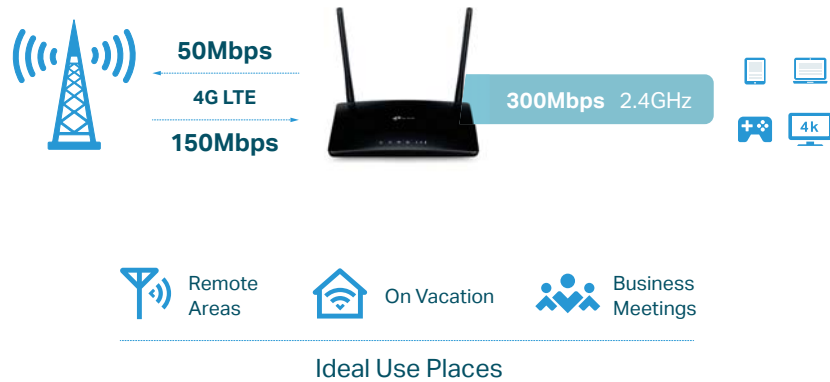
300Mbps
Wireless Speed

Qualcomm Inside for
Better Reliability

Highlights

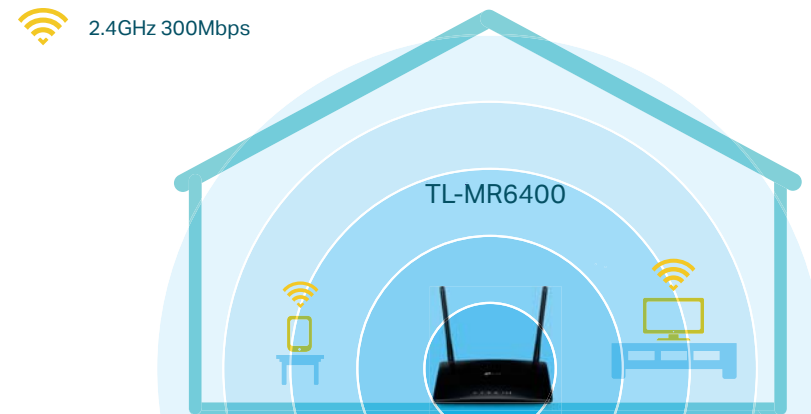
Superfast 4G LTE Speed for Reliable Wi-Fi

The TL-MR6400 uses 4G LTE technology to achieve speeds of up to 150Mbps download and 50Mbps upload. It also shares a Wi-Fi network with maximum speed of 300Mbps on 2.4GHz for gaming, streaming, and more.



Design for Maximum Network Coverage

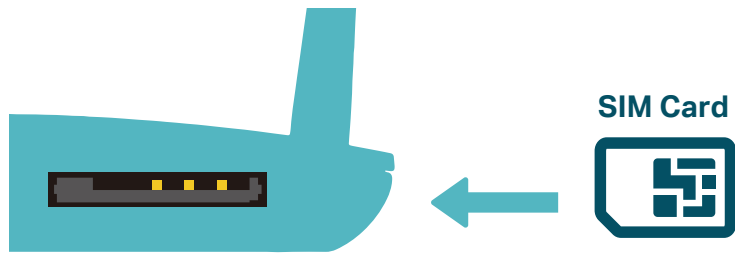
2 advanced high gain external antennas make efficient and stable connections to every device. Power Amplifier and Low Noise Amplifier boost sending and receiving capabilities, creating a wide-coverage Wi-Fi network for your home.



Highlights

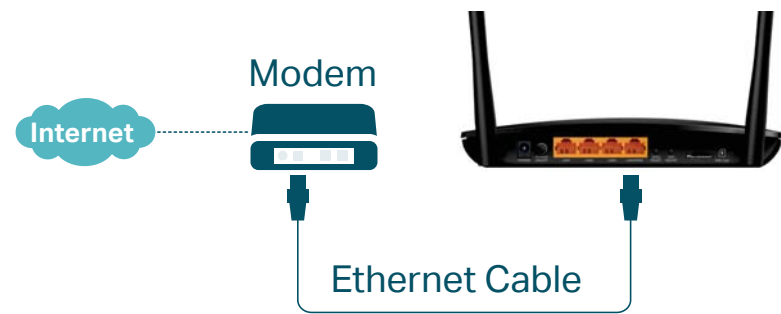
Plug and Play with a SIM Card

Simply insert your 3G/4G SIM card into the built-in slot, turn on the TL-MR6400 and start surfing!

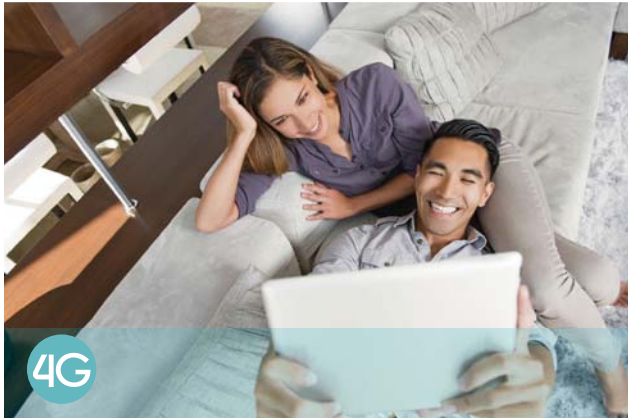


Available WAN Connection Backup

With a fully functional WAN/LAN port, enjoy a variety of backup connection types, including cable, fiber, and DSL modems.



Features



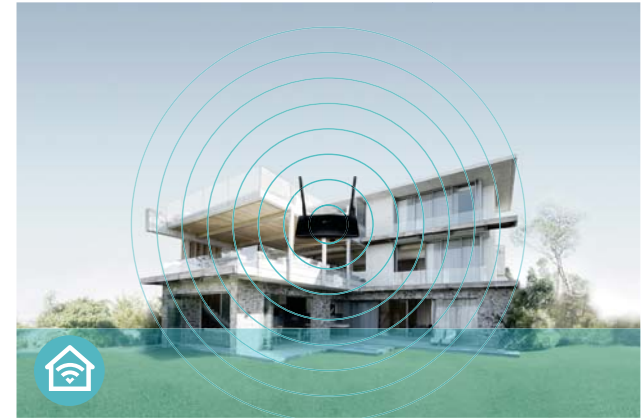
4G LTE

- 4G LTE – Ideal for cutting-edge 4G LTE network
- Faster Connections – Up to 150Mbps download speed and 50Mbps upload speed
- Backward Compatible – Compatible with 4G/3G network



Speed

- 300Mbps Wireless Speed – 300Mbps Wi-Fi allows stable speed for wireless activities, such as streaming, surfing, browsing and posting social media



Wi-Fi Range

- Better Coverage – Integrated antennas provide stable wireless connections and better coverage

Features



Reliability

- **Easy Bandwidth Management** – Advanced QoS makes it easier for you to manage the bandwidth of connected devices
- **Superior Stability** – Powerful processor enables you to connect up to 32 wireless devices with ease



Ease of Use

- **Intuitive Web UI** – Ensures quick and simple installation without hassle
- **Fast Encryption** – One-touch WPA wireless security encryption with the WPS button
- **Wi-Fi On/Off** – Conveniently turn on or off wireless radio as required
- **Hassle-free Management with Tether App** – Network management is made easy with the TP-Link Tether App, available on any Android and iOS device
- **Online Upgrade** – Keeps you informed of the latest firmware and allows online upgrade on the web UI



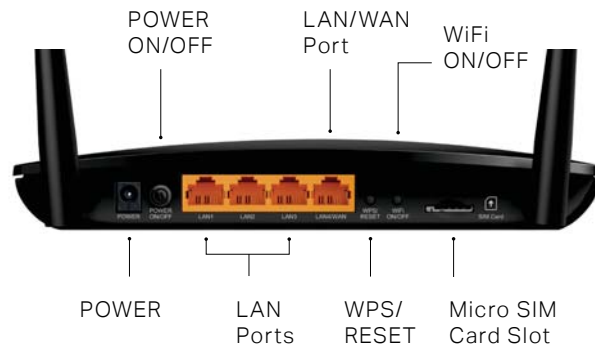
Security

- **Guest Network** – Keeps your main network secure by creating a separate network for friends and visitors
- **Access Control** – Establishes a whitelist or blacklist to allow or restrict certain devices to access the internet
- **Parental Controls** – Restrict internet access time and contents for children devices
- **Encryptions for Secure Network** – WPA-PSK/WPA2-PSK encryptions provide active protection against security threats

Specifications

Hardware

- Ports: 3 10/100Mbps LAN ports, 1 10/100Mbps LAN/WAN Port, 1 Micro SIM Card Slot
- Button: WPS/RESET Button, WiFi ON/OFF Button, POWER ON/OFF Button
- Antenna: 2 × Advanced High Gain External Antennas
- External Power Supply: 9V/0.85A
- Dimensions (W x D x H): 7.95 × 6.42 × 1.32 in. (202 × 163 × 33.6 mm)



Wireless

- Network Type:
 - 4G: FDD-LTE Cat4 (800/900/1800/2100/2600MHz), TDD-LTE (1900/2300/2500/2600MHz)
 - 3G: DC-HSPA+/HSPA+/HSPA/UMTS (900/2100MHz)
- Wireless Standards: IEEE 802.11b, 802.11g, 802.11n
- Frequency: 2.4GHz
- Signal Rate: 300Mbps at 2.4GHz
- CE EIRP: <20dBm (2.4GHz)
- Reception Sensitivity:
 - 11g 54M: -74dBm
 - 11n HT20: -71dBm
 - 11n HT40: -67dBm
- Wireless Function: Enable/Disable Wireless Radio, Wireless Schedule, WMM, Wireless Statistics
- Wireless Security: 64/128-bit WEP, WPA/WPA2, WPA-PSK/WPA2-PSK encryptions

Specifications

Software

- Operation Modes: 3G/4G Router, Wireless Router
- WAN Type: Dynamic IP/Static IP/PPPoE/PPTP(Dual Access)/L2TP(Dual Access)
- DHCP: Server, Client, DHCP Client List, Address Reservation
- Quality of Service: WMM, QoS
- Port Forwarding: Virtual Server, Port Triggering, UPnP, DMZ
- Dynamic DNS: DynDns, NO-IP
- VPN Passthrough: PPTP, L2TP, IPSec
- VPN Server: PPTP VPN, IPSec VPN, OpenVPN
- Access Control: Parental Controls, Local Management Control, Host List, Access Control
- Firewall Security: DoS, SPI Firewall, IP and MAC Address Binding
- Protocols: IPv4, IPv6
- Management: Access Control, Local Management, Remote Management
- Guest Network: 2.4GHz guest network

Others

- Certification: CE, RoHS
- Requirements:
 - Microsoft Windows 98SE, NT, 2000, XP, Vista™ or Windows 7, 8, 8.1, MAC OS, NetWare, UNIX or Linux
 - Internet Explorer 11, Firefox 12.0, Chrome 20.0, Safari 4.0 browsers or higher, or other Java-enabled browsers
 - Micro SIM Card
- Environment
 - Operating Temperature: 0°C~40°C (32°F ~104°F)
 - Storage Temperature: -40°C~70°C (-40°F ~158°F)
 - Operating Humidity: 10%~90% non-condensing
 - Storage Humidity: 5%~90% non-condensing
- Package Contents
 - 300Mbps Wireless N 4G LTE Router TL-MR6400
 - Power Adapter
 - RJ45 Ethernet Cable
 - Quick Installation Guide



For more information, please visit

<http://www.tp-link.com/en/products/details/TL-MR6400.html>

or scan the QR code left

Specifications are subject to change without notice. TP-Link is a registered trademark of TP-Link Technologies Co., Ltd. Other brands and product names are trademarks or registered trademarks of their respective holders. Copyright ©2018 TP-Link Technologies Co., Ltd. All rights reserved.

* Attention: This device may only be used indoors in all EU member states and EFTA countries.

* Maximum wireless speed of up to 300Mbps is the theoretical data rate derived from IEEE standard 802.11 specifications. Actual data throughput and wireless coverage will vary due to network conditions and environmental factors including volume of network traffic, building materials and construction, network overhead, actual data throughput rate, and wireless coverage. TP-Link makes no express or implied representations or warranties about this product's compatibility with any future standards.

www.tp-link.com

TP-Link 300Mbps Wireless N 4G LTE Router TL-MR6400